



ANNUAL REPORT

2023-2024



SATYA SPECIAL SCHOOL

EMBRACING DIVERSITY AND INCLUSION: OUR JOURNEY IN 2023

Table of CONTENTS



IN PIC. STUDENTS OF SATYA

03	About us	17	Stories of Change
04	Satya over the Years	19	Significant Events
05	The Year in Numbers	20	FY'23 – Auditor Report
06	Directors Note	23	Contributor Testimonials
07	Satya's Team	24	Organisational Details
08	Programs	25	Partners
15	Highlight of the Year	26	Picture Gallery
16	Centre wise information	28	Contact Information

ABOUT US



IN PIC. GROUP PHOTO OF SATYA SPECIAL SCHOOL

Satya Special School started in 2003 as a rehabilitation centre offering free services to 20 children with special needs, and now serves nearly 1410 children directly. Satya provides services through 10 centres including three village centres and Mobile Therapy across 44 villages. Satya works on creating an ecosystem for the inclusion of the disabled in society through specialized programs for the empowerment and livelihoods of the mothers of Children with Special Needs, community intervention, and advocacy with government institutions.

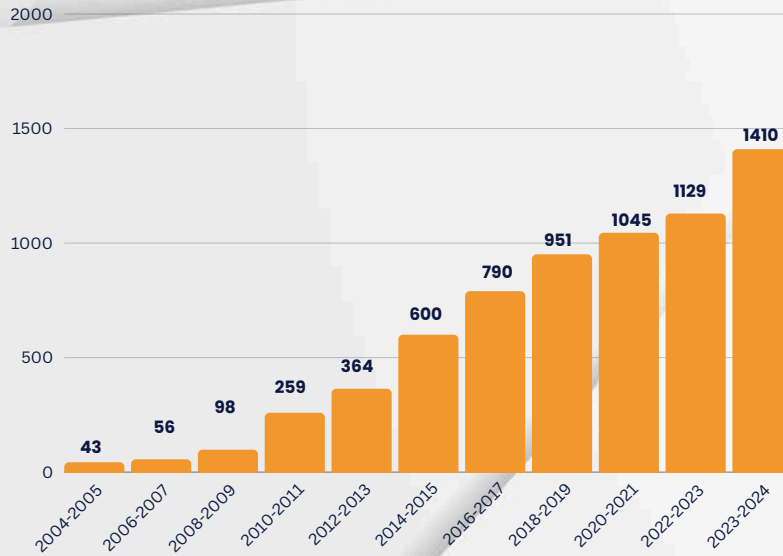
VISION

AN INCLUSIVE TOMORROW

MISSION

To empower people with special needs and lead the way towards inclusion in education, employment, and society at large by specialized intervention, rehabilitation, capacity building and public policy advocacy, thereby eradicating the stigma associated with disability.

SATYA OVER THE YEARS



IN PIC. A GRAPHICAL TALE OF OUR GROWTH IN TRANSFORMING LIVES



IN PIC. GRAPH REPRESENTING OUR MILESTONE OVER THE YEARS

THE YEAR IN NUMBERS

1410 TOTAL CHILDREN

PARENTS

7000

900

FAMILIES

URBAN CENTERS

7

110

STAFF

VILLAGE CENTERS

3

10

PROGRAMS

MOBILE UNITS

3

2

NEW INITIATIVES

SATELLITE CENTERS

2

42

CHILDREN ENROLLED IN
NEIGHBORHOOD SCHOOLS

OPERATIONAL
VILLAGES

44

219

CWSN'S SCHOOL
READINESS PROGRAM

DIRECTORS

Note



CHITRA SHAH

DIRECTOR, SATYA SPECIAL SCHOOL

Director's Note: A Year of Transformation and Hope

The past year at Satya Special School has been nothing short of transformative. Our path-breaking initiatives, including the launch of a new center in Karaikal, have significantly broadened our reach and impact. Through skill training and advocacy programs for adults with disabilities, we have witnessed remarkable strides in empowering our students. The success of our inclusion initiatives has been heartening, reflecting our commitment to creating a society that truly embraces diversity.

Our students have not only excelled academically but have also made their mark on international platforms, notably at the Special Olympics. Their achievements are a testament to their resilience and the unwavering support of our dedicated team. The introduction of a community resource pool for training mothers has been a groundbreaking step in addressing the human resource challenges we face. These mothers have become invaluable partners in our mission, bridging gaps and ensuring continuity in care and support.

As we look forward to the coming year, we are excited to announce the addition of new staff members and the development of a second line of leadership. Our vision is to expand and scale our services, reaching more individuals in need. We are determined to become a catalyst for change, mentoring individuals and organizations working with the disabled, and guiding them towards creating inclusive environments.

We extend our heartfelt gratitude to our donors and well-wishers whose generosity has made these achievements possible. Your support has been the cornerstone of our success, enabling us to dream bigger and achieve more. Together, we are building a future where every individual, regardless of their abilities, has the opportunity to thrive and succeed.

In the years to come, our aim is to be more than just a service provider. We aspire to be enablers, mentors, and advocates, rewriting the narrative around disability and inclusion. With your continued support, we are confident that we can create lasting change and build a more inclusive world for all. Thank you for being a part of our journey.

EXECUTIVE COMMITTEE MEMBERS



**Bindu
Modi**

2014

PRESIDENT



MS. SEETHA RAMKUMAR
GENERAL SECRETARY

2007



MS. CHITRA SHAH
DIRECTOR

2003



MR. BALA NARAYANASWAMY
EC MEMBER

2016



MR. SOMASEKAR
EC MEMBER

2023



MR. MADHAVAN
EC MEMBER

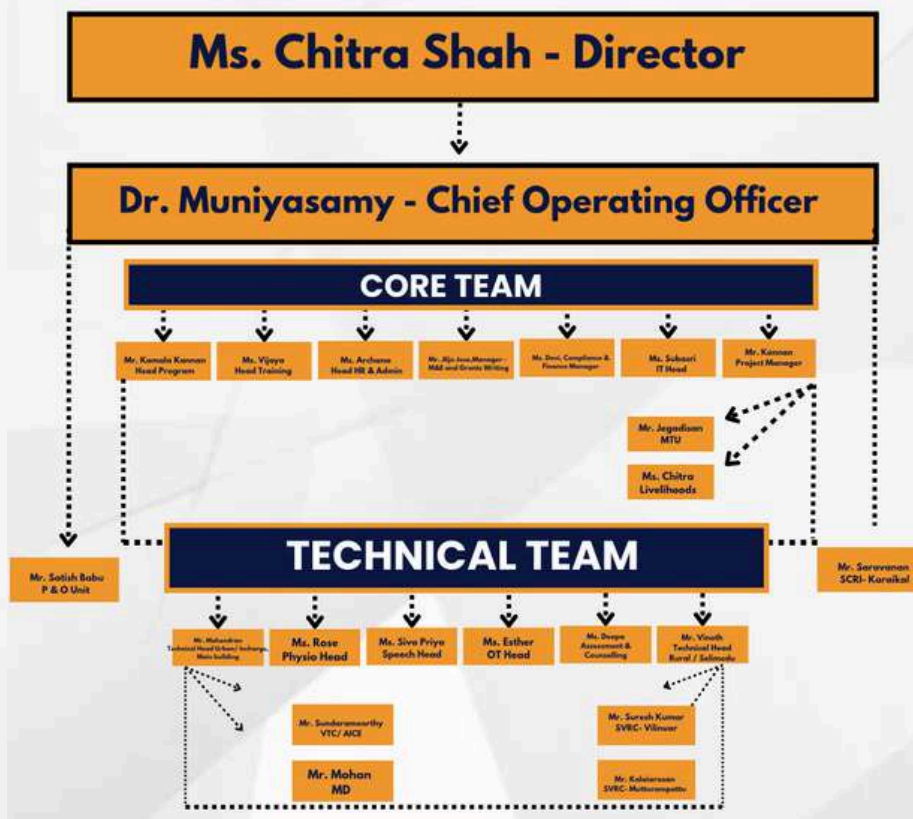
2023



MS. SWETHA PRAKASH
EC MEMBER

2023

ORGANISATIONAL STRUCTURE



PROGRAMS



IN PIC. CHILDREN TAKING PART IN EARLY INTERVENTION ACTIVITIES

1 Early Intervention

Our early intervention initiatives are designed to prevent developmental delays and provide individualized rehabilitation and education for children from birth to age six. At the JIPMER Newborn High-Risk Clinic, we identify and intervene with 750 children aged 0-3 annually. Our Satya Centers serve 75 children aged 3-6 each year. Individualized Education Plans (IEPs) are developed for 825 children from JIPMER and 225 from our Vocational Rehabilitation Centres (VRCs). In Karaikal, we enroll 75 children aged 0-6 in Early Intervention Centers. To improve accessibility, especially in rural areas, we have implemented a Mobile Therapy Unit that aims to reach 250 children aged 0-10.

2 Rehabilitation Services

Our rehabilitation and education programs enhance the physical and mental health of children with disabilities through comprehensive, individualized plans. We are developing IEPs that address both the educational and therapeutic needs of 200 children. For children who cannot be mainstreamed, we are preparing 10 students for the National Institute of Open Schooling (NIOS) examination. We have set ambitious targets, such as ensuring that 60% of children with special needs achieve at least two learning goals and maintaining 80% attendance for 39 children.



IN PIC. CHILDREN JOYFULLY ARRIVING TO SATYA SPECIAL SCHOOL

PROGRAMS

3 School Readiness

School readiness is a crucial focus area, aimed at improving children's physical and mental health and promoting inclusive education. We conduct literacy and numeracy enhancement programs for 80 children, alongside initiatives to develop communication, emotion management, and behavior skills for another 80 children. We aim to enroll 40 children in mainstream schools and assess 30 children from our VRCs. Our school readiness program prepares 30 children for formal education and enrolls 10 children with special needs in mainstream schools. We also organize inclusive activities to promote socialization and integration.



IN PIC. CLASSROOM ACTIVITIES

4 Inclusive Classroom

In collaboration with Wipro, we promote inclusive education by establishing model-inclusive classrooms within the public school system. This initiative builds the capacity of teachers and other key stakeholders while encouraging and evaluating inclusion in critical areas such as study, play, and other activities. In rural Puducherry, children with special needs are particularly vulnerable to dropping out due to a lack of trained teachers, need-based services, and awareness. By creating inclusive classrooms, we aim to demonstrate the benefits of inclusion for all children. Despite progress, challenges remain. Addressing these challenges systematically will pave the way for broader educational inclusivity.



IN PIC. INCLUSIVE CLASSROOM ACTIVITIES

PROGRAMS



IN PIC. INCLUSIVE COMMUNITY ACTIVITIES

HOLISTIC CAPACITY BUILDING

To foster an inclusive society, we enhance stakeholder awareness and improve staff capabilities. We hold Rural Inclusive Melas in four villages, sensitize 400 healthcare providers annually, and train 100 Anganwadi workers. We also conduct 20 programs for primary caregivers and 25 for Anganwadi workers and health professionals, each with 20 participants, and train 25 staff members per session.



IN PIC. STAFF CAPACITY BUILDING ACTIVITIES

INCLUSIVE COMMUNITY DEVELOPMENT

Our community development initiatives prioritize inclusivity by training and empowering local communities. We train 10 rural youth or family members of children with special needs as Community Resource Pool and educate 400 parents with personalized education plans to engage them in their children's development. Additionally, we have empowered 15 rural women as Community Rehabilitation Assistants (CRAs) to support individuals with disabilities effectively.



IN PIC. HOLISTIC CAPACITY BUILDING

STAFF CAPACITY BUILDING

Recognizing that our impact depends on our team's capabilities, we invest heavily in staff development. We plan to train 75 staff members, develop a comprehensive staff manual, and provide specialized training for all our special educators. We also engage in advocacy efforts, lobbying the government to implement inclusive education in five government schools, thereby influencing systemic change in the education sector.

INTERVENTION

MICRO-ENTERPRISE INITIATIVE

Our microenterprise initiative program supported by Ashwini Seetha Foundation aims to promote marginalized women as entrepreneurs. We plan to establish 10 micro-enterprises and generate two revolving loans. We aim to increase participants' income by 20% and establish two business promotion linkages, contributing to the economic empowerment of women in our communities.



IN.PIC. A PETTY SHOP ESTABLISHED BY OUR MICRO-ENTERPRISE INITIATIVE.



IN.PIC. SKILLS TRAINING FOR SPECIALLY-ABLED STUDENTS.

THIRANKOODU

At Thirankoodu, we empowered women within special needs and mothers of CWSNs who aspire to start a collective. We offer training programs that equip women with various skills and resources to enhance their quality of life. Our entrepreneurship training, marketing support, and cooperative model enable women to become self-sufficient. We also run computer training classes in the evening at the Resource Centre, further enhancing the skills and opportunities of women.

SKILL TRAINING

Our skill training initiatives provide valuable skills to adolescents and young adults with disabilities. We plan to identify 50 individuals aged 16-18 for pre-vocational training and enroll 25 in certificate courses. Additionally, we aim to help five urban adults and five rural adults with disabilities find skilled-based employment. This program is crucial for promoting independence and improving the quality of life for individuals with disabilities.



IN PIC: KALAIVANI'S FOOD CART.

PROGRAMS

MOBILE THERAPY UNIT (MTU)



Satya Special School's Mobile Therapy Units (MTUs) provide crucial services by delivering therapy and care to children with special needs who face barriers to accessing traditional therapy centers. These units are especially beneficial for older children or those with coordination issues who cannot visit village centers regularly. By bringing therapy to their doorstep, we ensure these children receive the necessary interventions to support their development and well-being, thereby reducing the burden on their families and improving their quality of life.

DELIVERING THERAPY TO CHILDREN WITH SPECIAL NEEDS

REFERRALS AND SUPPORT SERVICES



To address parents' hesitation in obtaining a disability certificate for their child, we offer orientation sessions highlighting the certificate's benefits and guide parents through obtaining it from a Government Hospital. The Unique Disability Identity (UDID) card is mandatory across India, and we educate parents on its importance and assist them in obtaining it. The Niramaya Health Insurance Scheme provides up to one lakh rupees annually for individuals with intellectual disabilities, cerebral palsy, multiple disabilities, and autism. We facilitate awareness and enrollment, aiding 186 families, and have successfully claimed Rs. 1.5 lakhs in reimbursements. We also support legal guardianship certification, referring 15 persons with disabilities and guiding parents through the necessary steps and documentation.

ASSISTING WITH DISABILITY CERTIFICATES, UDID CARDS, & INSURANCE

PROGRAMS

VILLAGE REHABILITATION CENTRES



Our Village Rehabilitation Centres offer state-of-the-art rehabilitation facilities to rural children with special needs. These centers provide a range of services including physiotherapy, solar-powered hydrotherapy, speech therapy, activities for daily living, and disabled-friendly outdoor play equipment.

A kitchen with a dining hall serves nutritious food. We provide tailored therapies, periodic medical check-ups, outings to accessible sites, and training programs for parents. We also conduct awareness-raising campaigns and regular interactions with parents to discuss the child's progress. Quarterly assessments are performed to evaluate the children's progress, and the results are discussed with parents to enhance the child's performance and condition.

HIGHLIGHT OF THE YEAR



ENABLING INCLUSION APP – SATYA GOES DIGITAL

Designed for Early Intervention and child Rehabilitation, the EI App is a global solution trusted by community workers, rehab specialists, and program managers. It is now available as a web app in all major languages and in English for mobile users.

KEY FEATURES:

- **Awareness & Capacity Building:** Empower your community with essential resources.
- **Management Dashboard:** Streamline your program with a centralized management hub.
- **Family Outcomes Tracking:** Monitor and enhance family progress with feedback tools.
- **Regular Therapy Visits:** Schedule and support consistent therapy sessions.
- **Daily Scheduling & Tour Planning:** Organize activities efficiently.
- **Goal Setting & Intervention Plans:** Customize goals and interventions for each child.
- **Assessments & Evaluations:** Conduct thorough assessments and evaluate outcomes.
- **Screening Module:** Identify needs with an integrated screening tool.

Satya joins the global community to improve early intervention and child rehab with the EI App!

SATYA SERVICE CENTER'S

INFORMATION

Name of Centre	Year of Establishment	Staff Strength	Child count (or) product	Services Offered
Urban Center	2003	43	130	Special Education, Physio, Occupational and Speech Therapy, Behaviour Modification
Skill Training Center	2007	10	58	Behaviour Modification, Vocational Skill Training
Alternative Inclusive Center for Education	2017	3	45	NIOS, Special Education, Behaviour Modification
Village Rehabilitation Center, Selimedu	2010	13	64	Special Education, Physio and Speech Therapy, Behaviour Modification
Village Rehabilitation Center, Vilinuar	2010	15	92	Special Education, Physio and Speech Therapy, Behaviour Modification
Village Rehabilitation Center, Mutturampet	2010	11	71	Special Education, Physio and Speech Therapy, Behaviour Modification
Multiple Disability Center	2014	13	100	Special Education, Physio, Occupational and Speech Therapy, Behaviour Modification
New Born High Risk Clinic, JIPMER	2015	4	5042	Special Education, Physiotherapy, Sensory Integration Therapy
Prothetic & Orthopedic Unit	2015	3	132*	AIDS and Appliances
Satya Center for Rehabilitation and Inclusion, Karaikal	2024	11	25	Special Education, Physio and Speech Therapy, Behaviour Modification, Mobile Therapy Unit

*products

STORIES OF CHANGE

PRIYADHARSHINI



IN PIC. PRIYA'S DANCE ON WORLD AUTISM DAY

She practiced tirelessly, mastering dance moves without missing a beat, feeling the vibrations of music through her feet.

Her dedication paid off spectacularly when she won a national dance competition. Priyadharshini became a star of Satya, inspiring everyone with her talent and tenacity. She didn't just dance; she spoke volumes through her movements, proving that disability is never a limitation.

Today, Priyadharshini dreams of working in a big city office and mastering computer skills—a dream that is within her grasp, thanks to the inclusive education and unwavering support she received at Satya Special School.

Priyadharshini's journey is a testament to the transformative power of belief and opportunity. Together, let's create a world where every individual can shine brightly, regardless of the challenges they face.

Priyadharshini's Unstoppable Rhythm: Defying Expectations and Shining Bright

Born with a hearing impairment in a small village, Priyadharshini faced a world that often underestimated her abilities. Her early years were a struggle; she attended a regular school where communication was a constant challenge. Her family lived in a fragile, old house, reliant on daily wages, with little support from those around us.

Everything changed when a friend suggested Satya Special School. It was a turning point. The school understood Priyadharshini's unique needs and provided the support she needed to thrive. Transitioning from a mainstream school was not easy, but with advanced hearing devices and financial assistance for her family, she began to blossom.

At Satya, Priyadharshini's spirit soared. She embraced every opportunity, excelling not just academically but also socially. Despite her hearing impairment, she discovered a passion for dance. People doubted her abilities, but Priyadharshini's determination was unwavering.



IN PIC. PRIYA'S DANCE ON WORLD AUTISM DAY

STORIES OF CHANGE

KALAIVANI

In the quiet streets of Pondicherry, amidst the bustling life of the city, Kalaivani's story unfolded like a tapestry woven with threads of struggle and hope. She faced a myriad of challenges—a husband battling illness and addiction, a child with special needs, and the constant shadow of financial instability.

With unwavering determination, Kalaivani stepped into the arena of her family's future. The weight of loan lenders and the uncertainty of unstable housing loomed large, but she refused to surrender to despair. Instead, she sought a lifeline—a beacon of hope that would guide her through the storm.

That lifeline revealed itself in the form of Satya Special School's livelihood program. Here, amidst compassionate souls and supportive hands, Kalaivani found her spark. Inspired by the Thirankoodu project, she envisioned a food cart venture—a humble dream fueled by love and necessity.

With an idly pot, grinder, and mixer, Kalaivani's Food Cart emerged like a phoenix rising from ashes. The aroma of her cooking filled the air, drawing in customers and opportunity alike. What began as a cart evolved into a bustling eatery, offering comfort in every meal and stability in every dish.

Through sheer grit and perseverance, Kalaivani not only repaid debts but also built a sanctuary for her family—a place they could call home. Her journey is a testament to the transformative power of community and determination.

Kalaivani's tale reminds us that amidst life's trials, a helping hand can weave miracles. Let us stand together, extending support and empowering individuals like Kalaivani to script their own stories of triumph through Satya's livelihood programs.



IN PIC. KALAIVANI: A BENEFICIARY FROM SATYA'S LIVELIHOOD PROGRAMS

STORIES OF CHANGE

SAI JOTHI

Sai Jothi, a 3-year-old child, lives with her family in Pondicherry. Her father, an auto driver, and her mother, a homemaker, noticed early on that their daughter faced significant challenges.

During Sai Jothi's first year, doctors at JIPMER diagnosed her with Right Hemiplegic Cerebral Palsy (CP). This realization prompted her parents to seek specialized care to address her developmental delays. They brought her to Satya in 2023, when she was two years old, following a referral from JIPMER.

When she first arrived at Satya, Sai Jothi struggled with social interaction, muscle weakness in her right hand, poor motor planning, and delayed speech. She couldn't play with other children, had difficulty holding objects, and rarely used her right hand. Initially, she resisted therapy, often crying during sessions.

Through dedicated Occupational Therapy, Speech Therapy, and Physiotherapy, Sai Jothi's progress has been remarkable.

She has moved from a whole grasp to a tripod grasp and can now use her right hand for daily tasks. Her social interactions have improved, and she can follow commands effectively. She even enjoys playing with her brother and father, a significant change from her earlier reluctance.

This transformation has brought immense joy to her family. They no longer worry about her falling behind in her milestones and are delighted to see her happily attending school for therapy sessions. Sai Jothi's journey highlights the importance of early intervention and consistent therapy, offering hope and inspiration to other families facing similar challenges.



**IN PIC. SAI JOTHI'S JOURNEY:
FROM STRUGGLES TO TRIUMPH**

SIGNIFICANT EVENTS

Dhanth Sahayak

In collaboration with Ragas Dental College, Satya Special School initiated a six-month Dhanth Sahayak Training Program to create employment opportunities for individuals with disabilities as dental assistants and provide them with essential skills and knowledge for independent, sustainable livelihoods.

Inclusive Science Fair

The Inclusive Science Expo at Satya Special School brought together students, educators, and dignitaries to foster scientific curiosity and showcase experiments and models that enhance learning.

CRA Program

Satya Special School held a certificate distribution program, supported by Australian Aid, to honor mothers who completed the Community Rehab Assistants course, addressing the shortage of rehab professionals and empowering them to support individuals with disabilities in their communities.

Special Olympics

With support from The HANS Foundation, Satya Special School recruited professional trainers in 2016, enabling children with special needs to excel in sports. This led to international achievements, such as Ravimathi's gold and silver medals in athletics, Dhanasekar's basketball gold, and Vishal's four silver medals in powerlifting at the Berlin Summer Games.

IN PIC. SPECIAL OLYMPICS PARTICIPANTS

Capacity Building

Stakeholder Group	No. Of Prog	Total hours	No. of Participant
Parents	19	70	834
Staff	12	60	463
Others	39	135.5	6151



AUDITOR'S REPORT

FINANCIALS

SATYA SPECIAL SCHOOL
CONSOLIDATED INCOME AND MPENDITURE ACCOUNT FOR THE YEAR ENDED 31.03.2024
CONSOLIDATED INCOME AND EXPENDITURE STATEMENT FOR THE YEAR ENDED 31ST MARCH 2024

RECEIPTS	FC	Local	Amount
Opening Balance			
Cash on Hand	6,738.00	16,013.46	22,751.46
Cash at Bank:			
HDFC Bank		323,227.63	323,227.63
Union Bank of India	908,035.97	3,616,899.81	4,524,935.78
SBI	20,657.69		20,657.69
Andhra bank		13,021.29	13,021.29
Grants and Donations:			
Donations	825,743.84	2,117,177.91	2,942,921.75
Grants Received	29,494,691.71	14,087,477.08	43,582,168.79
CSR Fund Received		3,314,575.00	3,314,575.00
Government Fund:			
DDRS Project - Grant Received		2,025,806.00	2,025,806.00
Contributions/Donations & Other Sources			
Fixed Deposit - Interest	52,817.00	164,045.00	216,862.00
Sale of Products		98,790.00	98,790.00
Sponsorship		87,200.00	87,200.00
Contributions Received		111,901.00	111,901.00
Bank Interest		11,382.00	11,382.00
Grant Unutilised	13,325.10		13,325.10
Gift in Kind		426,758.00	426,758.00
Fixed Deposits Matured during the year	1,550,000.00	6,313,584.00	7,863,584.00
Satya Contribution - DDRS		6.00	6.00
Loans & Advances	640001	13302722.52	13,942,723.52
Collections:			0.00
TDS Collected	124,971.00	87,054.00	212,025.00
EPF- Collected	760,497.00	875,395.00	1,635,892.00
ESI- Collected	142,856.00	160,177.00	303,033.00
TOTAL	34,540,334.31	47,153,212.70	81,693,547.01

AUDITOR'S REPORT

FINANCIALS

SATYA SPECIAL SCHOOL
CONSOLIDATED INCOME AND MPENDITURE ACCOUNT FOR THE YEAR ENDED 31.03.2024
CONSOLIDATED INCOME AND EXPENDITURE STATEMENT FOR THE YEAR ENDED 31ST MARCH 2024

By	Programme Expenses			
	Project / Programme expenses	761,204.00	263979	1,025,183.00
	CSR Funds Programm expenses		1,601,304.46	1,601,304.46
	Workshop and Training Expenses	337256	316,866.00	654,122.00
	Special event and Mela expenses	130,071.00	10,522.00	140,593.00
	CBP-Parent/Staff/Stake holders	172,923.00		172923
	Supplimentary Nutritions	730,942.00		730,942.00
	Aids & Appliances	246,705.00	35417	282,122.00
	Expenses for 22-23	1,990,769.69		1990769.69
	Give India Foundation- ProgrammeExpenses	442,319.39	1,012,084.00	1454403.39
	Australian Aid Programme Expenses	896,961.00		896961
	Portech Programme Expenses	105,276.00		105276
	Rebuild India Fund Programme Expenses	818,362.00		818362
By	Programme Management & Admin Cost:			
	Salary	8,084,794.00	6,307,038.00	14391832
	EPF & ESI Employer Contribution	570799	616,418.00	1187217
	Staff Welfare and benefit expenses	146,518.00	1,441,462.00	1587980
	Travelling / Conveyance Expenses	39,956.90	4,470.00	44,426.90
	Vehicle Repairs a Maintenance	550,000.00	2,951,355.00	3,501,355.00
	Electricity / Water Charges	61,728.00	171,643.00	233,371.00
	Administrative Expenses		181,090.43	181,090.43
	Printing & Stationery expenses	126591	104,826.00	231417
	Building Rent and Repairs & Main. exp	950591.15	834424	1785015.15
	Subscription charges	4,248.00		4248
	Postage and Courier Expeses	10,255.00	2,878.00	13133
	Audit, Internal and Consultancy Fees	80535		80535
	Telephone, Internet & Bank Charges	72,811.33	43,759.12	116570.45
	Office general and maintenance expenses	88056.1	46,223.53	134279.63
	Transport - Reimbursement	2,247,400.00		2247400
	Fund Raising Expenses		593,776.00	593776
	Interest on Loan from Union Bank of India		17,041.00	17041
	DDRS Govt. Project Expenses		6,783,986.32	6783986.32
	TDS on FD		5287	5287
	Rental Advance		250000	250000
	Grant Unutilised TRF from FCRA A/c	13325.1		13325.1
	Grant Unutilised - CSR Fund		24.75	24.75
	Loans & Advances	780000	11230015	12010015
	FD Matured during the year	1550000	6400000	7950000
	EPF & ESI Remitted	903353	616219	1519572
	TDS Remitted	124971	87054	212025
	Fixed Assets	6774414	469,634.00	7244048
By	Closing Balance			
	Cash on Hand	5039	15668	20707
	Cash at Bank:			
	HDFC Bank		801,547.54	801547.54
	Union Bank	4,670,523.78	1,100,523.53	5771047.31
	SBI Bank	51,635.87	187,783.34	239419.21
	Andra bank		2,648,893.68	2648893.68
	TOTAL	34,540,334.31	47,153,212.70	81,693,547.01

AUDITOR'S REPORT

FINANCIALS

SATYA SPECIAL SCHOOL CONSOLIDATED INCOME AND EXPENDITURE STATEMENT FOR THE YEAR ENDED 31ST MARCH 2024

	EXPENDITURE	FC	Local	Amount
To	Programme Expenses			
	Project / Programme expenses	761,204.00	553979	1,315,183.00
	CSR Funds Programm expenses		1,601,304.46	1,601,304.46
	Workshop and Training Expenses	337256	316,866.00	654,122.00
	Special event and Mela expenses	130,071.00	10,522.00	140,593.00
	CBP-Parent/Staff/Stake holders	172,923.00		172923
	Supplimentary Nutritions	730,942.00		730,942.00
	Aids & Appliances	246,705.00	35417	282,122.00
	Expenses for 22-23	1,990,769.69		1990769.69
	Give India Foundation- ProgrammeExpenses	442,319.39	1,012,084.00	1454403.39
	Australian Aid Programme Expenses	896,961.00		896961
	Portech Programme Expenses	105,276.00		105276
	Rebuild India Fund Programme Expenses	818,362.00		818362
To	Programme Management & Admin Cost:			
	Salary	8,084,794.00	8,707,659.00	16792453
	EPF & ESI Employer Contribution	570799	857,395.00	1428194
	Staff Welfare and benefit expenses	146,518.00	781,421.00	927939
	Travelling / Conveyance Expenses	39,956.90	728824	768,780.90
	Vehicle Repairs a Maintenance	550,000.00	2,951,355.00	3,501,355.00
	Electricity / Water Charges	61,728.00	171,643.00	233,371.00
	Administrative Expenses		181,090.43	181,090.43
	Printing & Stationery expenses	126591	106,466.00	233057
	Building Rent and Repairs & Main. exp	950591.15	1306811	2257402.15
	Subscription charges	4,248.00		4248
	Postage and Courier Expeses	10,255.00	2,878.00	13133
	Audit, Internal and Consultancy Fees	80535	16,000.00	96535
	Telephone, Internet & Bank Charges	72,811.33	44,849.92	117661.25
	Office general and maintenance expenses	44231.1	46,223.53	90454.63
	Transport - Reimbursement	2,247,400.00		2247400
	Fund Raising Expenses		593,776.00	593776
	Interest on Loan from Union bank of India		17,041.00	17041
	Excess of Income over Expenditure		2,372,434.41	2372434.41
	TOTAL	19,623,247.56	22,416,039.75	42,039,287.31

AUDITOR'S REPORT

FINANCIALS

SATYA SPECIAL SCHOOL
 CONSOLIDATED INCOME AND EXPENDITURE STATEMENT FOR THE YEAR ENDED 31ST MARCH 2024

	INCOME	FC	Local	Amount
By	Grants and Donations :			
	Under FCRA :			
	FCRA	2,430,222.05		2,430,222.05
By	Others :			
	CIAI	1,395,133.53		1,395,133.53
	Enfant	541,537.71		541,537.71
	RIST	12,193,371.54		12,193,371.54
	REVOLVING	362.90		362.90
	WINTERIN	233,631.63		233,631.63
	MTU	1,528,193.87		1,528,193.87
	CRI-Karaikal	1,248,638.33		1,248,638.33
	APPI		10,816,484.68	10,816,484.68
	WIPRO		1,515,508.27	1,515,508.27
	ASF		35,329.01	35,329.01
	Give India Foundation		1,516,477.08	1,516,477.08
By	Contributions/Donations & Other Sources			
	Fixed Deposit - Interest	52,156.00	159,645.00	211,801.00
	Donation Received		2,117,177.91	2,117,177.91
	Sponsorship		87,200.00	87,200.00
	Contributions Received		100,901.00	100,901.00
	Bank Interest		11,382.00	11,382.00
	Honorarium		11,000.00	11,000.00
	Sale of Products		98,790.00	98,790.00
	CSR Fund:			
	CSR Grant received		1,799,075.00	1,799,075.00
	Government Fund:			
	DDRS Project -Grant Utilised during the year		4,147,069.80	4,147,069.80
	TOTAL	19,623,247.56	22,416,039.75	42,039,287.31

Satya Special School

Annual Report

Annual Report

CONTRIBUTOR

Testimonials



Manicikalalu

We at Manicikalalu are delighted to highlight our collaboration with Satya on the Thirankoodu and MTU projects since 2020. Their dedication and resolve have been instrumental in supporting the growth of many kids and women in India, showcasing the need for more such special schools worldwide.

The Hans Foundation

Your dedication has positively impacted many lives, and we deeply value our partnership. Your efforts in mainstream education, rural centers, and government schools are commendable, setting a model for long-term inclusion. Here's to many more years of collaboration in promoting disability inclusion.



Wipro Foundation

Satya's efforts to mainstream individuals with special needs in rural centers and government schools are commendable. Your vision for long-term inclusion is inspiring and sets a model for others. We look forward to many more years of collaboration in promoting disability inclusion.





ORGANISATION

»»»» DETAILS ««««

Full Legal Name: Satya Special School

Official Address: 6,7,8 ECR Road
Karuvadikuppam, Pondicherry

Telephone: 04132263592

Email Address:

admin@satyaspecialschool.org

Website:

<https://www.satyaspecialschool.org/>

**Registered Under the Society's registration
Act 1860**

Reg No: 521/2002

Registered Under Section 52 of
the PWD Act Valid up to

30.06.2026

12AA 80G Registered Under Section 12AA of the
Income Tax and Exemption certificate granted
Under section 80G of the Income Tax Act

Income Tax PAN No: AAGAS1322L

CSR I- CSR00003953

Unique ID of NITI Aayog (Darpan)-
PY/2009/0002479

Bankers: State Bank of India (FCRA)

Union Bank of India

HDFC Bank Pondicherry

»»»» OUR WORK ««««

- Supports any person with intellectual disabilities, irrespective of their degree of disability, socio-economic condition and age.
- Focuses on inclusion in various settings: right from the home to law-making.
- Eradicates the stigma associated with disabilities, especially intellectual disabilities.
- Encourages self-advocacy, enabling the disabled community and their caregivers to build a better, inclusive future
- Improves the quality of life through better health care and individualized rehabilitation programs.

PARTNERS



RESOURCE



INSTITUTIONAL



CSR



KNOWLEDGE



PROJECT



GOVERNMENT



Government of Puducherry



THE NATIONAL TRUST



Government Of India

PICTURE

»»»» GALLERY ««««



In Pic. Satya Special School at Special Olympics World Summer Games



In Pic. Best Entrepreneur Award received by our Alumni



In Pic. Classroom Activities

PICTURE

▶▶▶▶ GALLERY ◀◀◀◀



In Pic. Special Olympics Participants of Satya Special School



In Pic. Classroom Activities

Contact Us



0413-2263598



admin@satyaspecialschool.org



<http://www.satyaspecialschool.org/>



6,7,8, ECR Main Road,
Karuvadikuppam, Puducherry,
Pin - 605008, India



Satya Special School



@satyaspecialschool



Satya Special School



JOIN US IN
Empowering Abilities,
Transforming Lives
TOGETHER